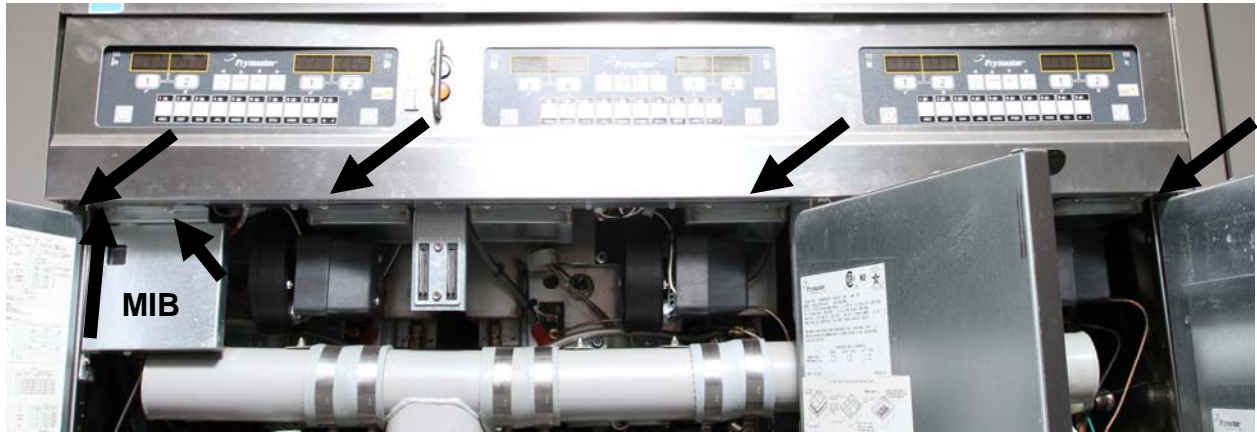
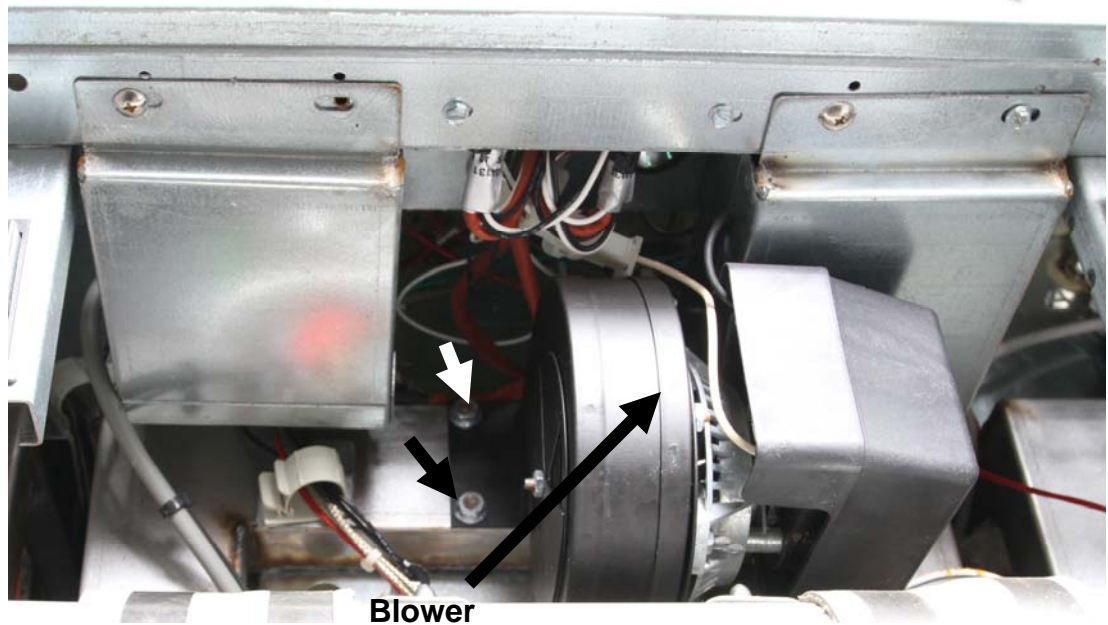


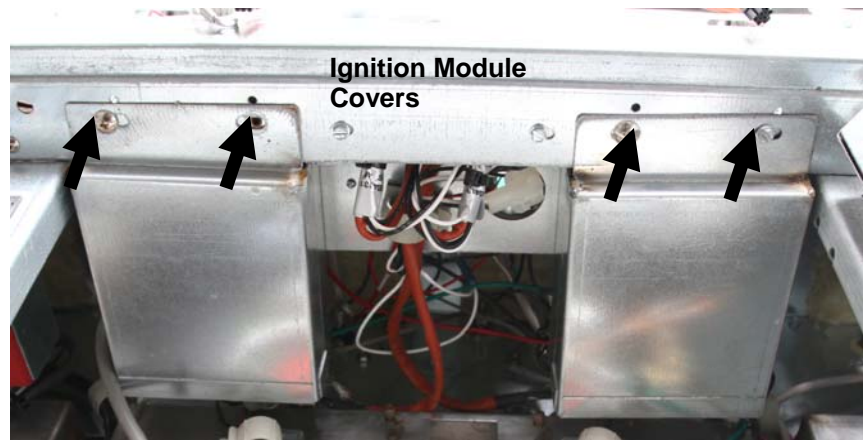
LOV Gas ATO, AIF Probe Inspection



1. Remove bezel and MIB.



2. Remove four blower nuts, two on each side of mounting plate. Remove blower.

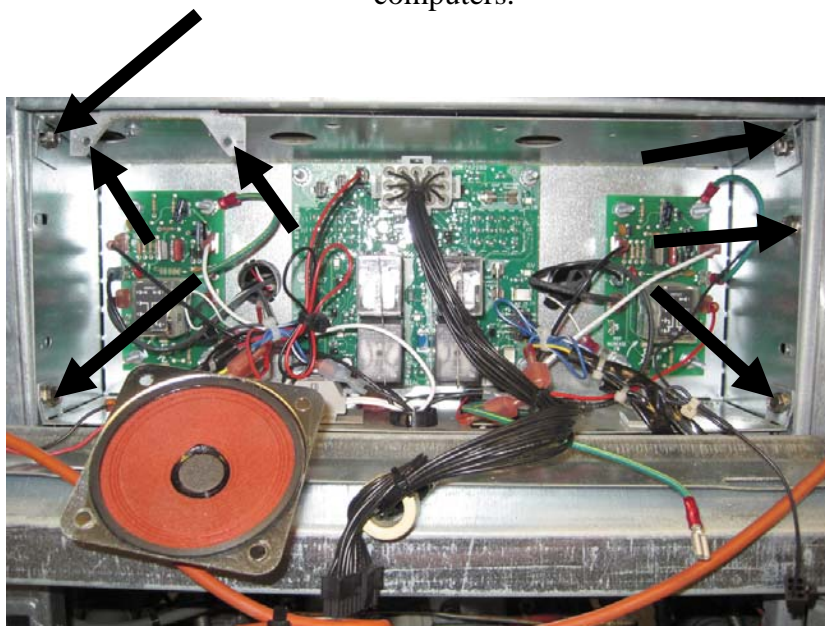


3. Remove ignition module covers.

4. Tighten the hi-limit and temperature probes.



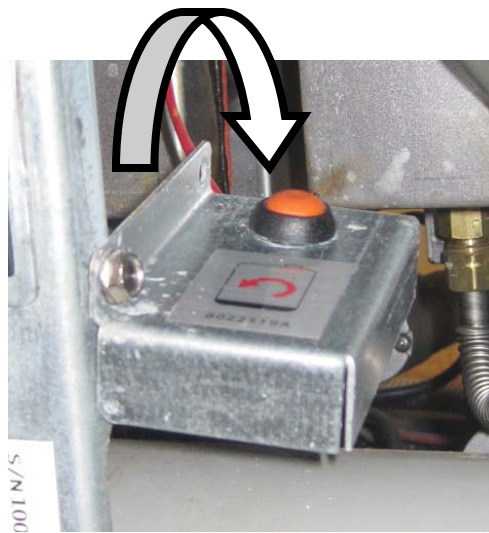
5. Lower computers, unplug all wires to computers and remove computers.



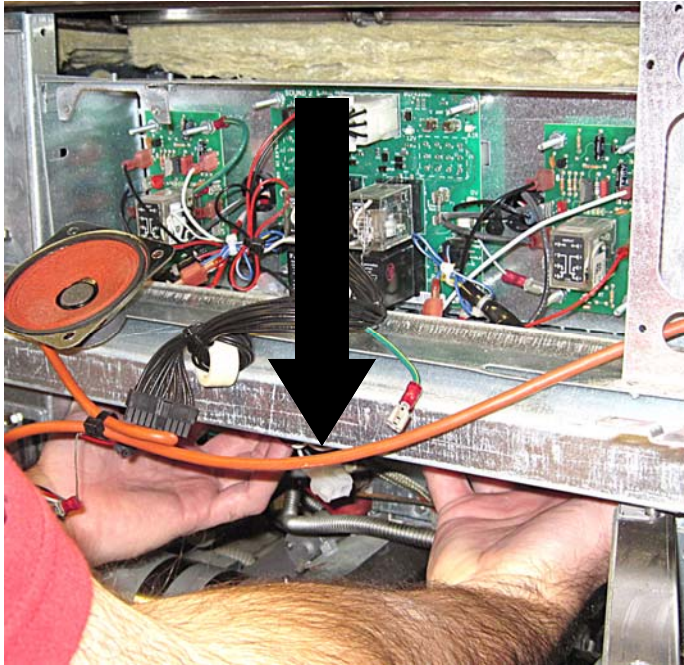
6. Remove the screws attaching the speakers to the frame and set inside the box.

7. Remove the 4 screws in the corners attaching the control box to the frame. Remove the screw attaching the locator wire and set aside.

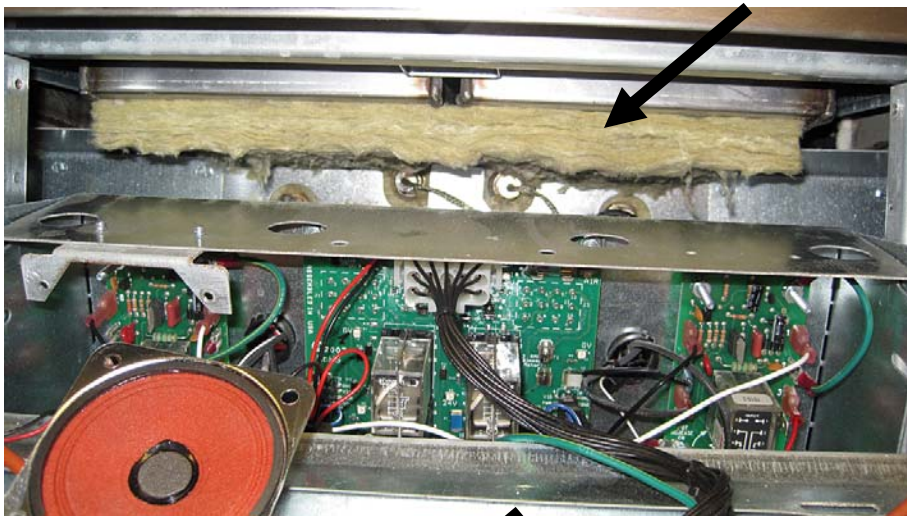
NOTE: Locator wires are control box specific. Do NOT accidentally cross positions of locator wires between boxes.



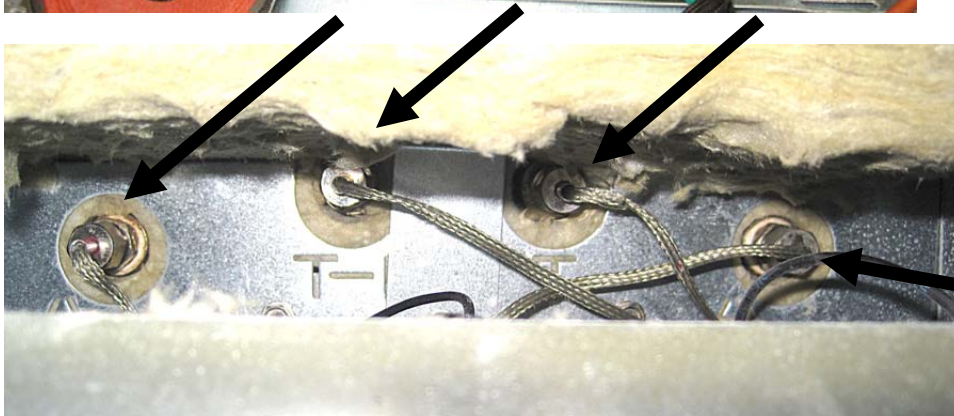
8. Remove the top screw from the JIB reset button and rotate down as shown in photo



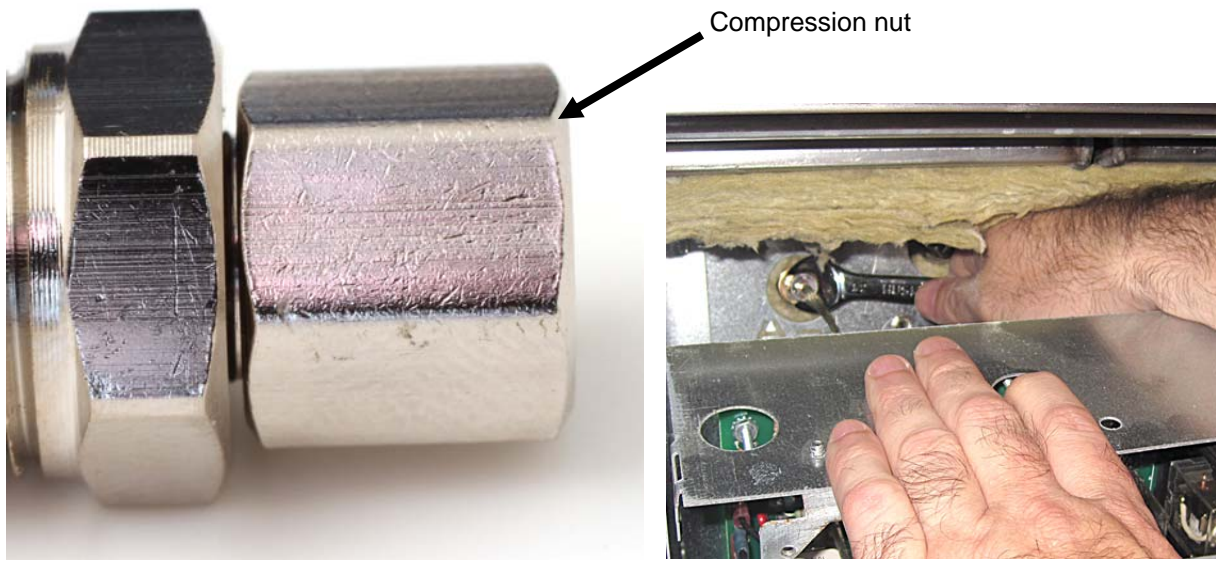
9. Slide the control box down by gripping the bottom and pulling downward until the probes are visible.



10. The probes are visible behind the control box for inspection.



11. Inspect and tighten compression nuts on the probes marked by arrows.



12. Tighten the compression nut, not the fitting. The nut should be tightened to approximately 8 foot pounds (finger tight plus one additional turn).



NOTE: Compression nuts with minor leaks (as shown above) will be corrected by tightening.

Frymaster needs a total count of leaking or weeping probes per bank of fryers.

If the surrounding insulation is saturated from the leak, the probe must be changed and the insulation replaced.

13. Once finished, reassemble in reverse order and test function of the fryer including filtration and top off.

NOTE: Ensure that all locator plugs are reinstalled correctly on the proper fryer. Locator plugs installed in the improper position may cause filtration and top off issues.